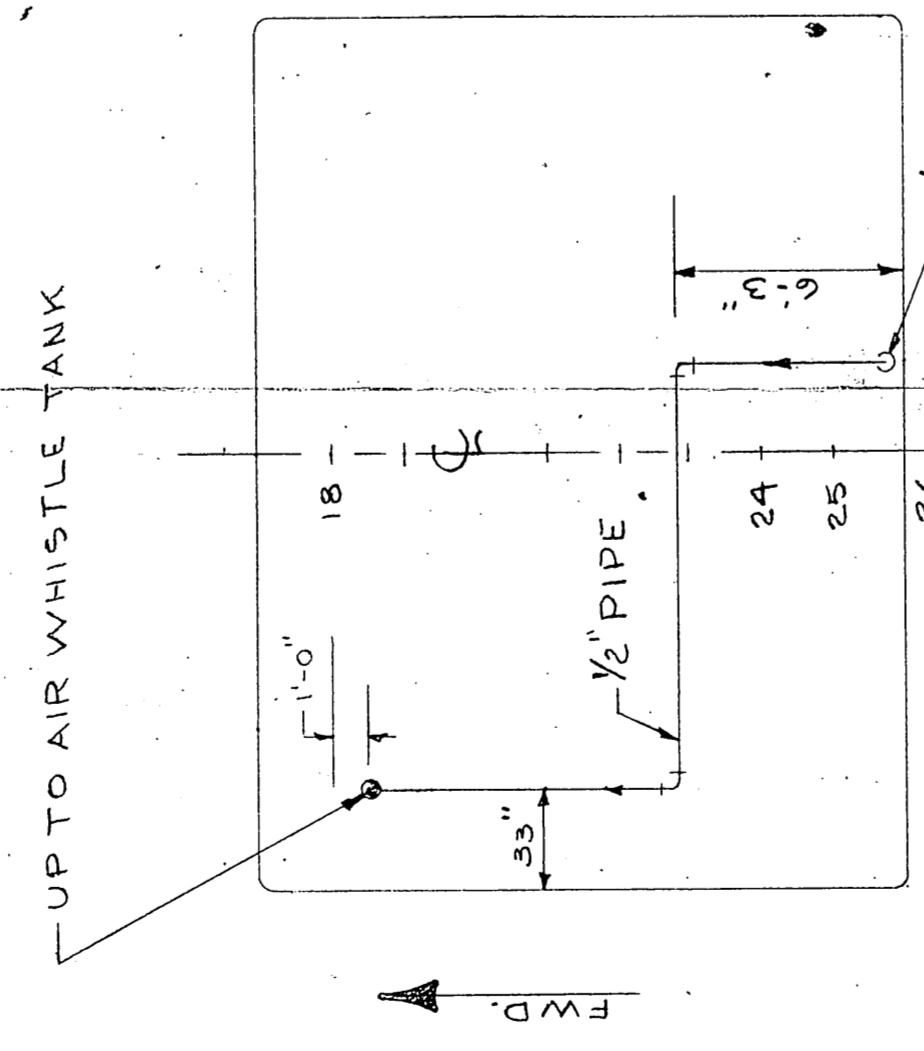
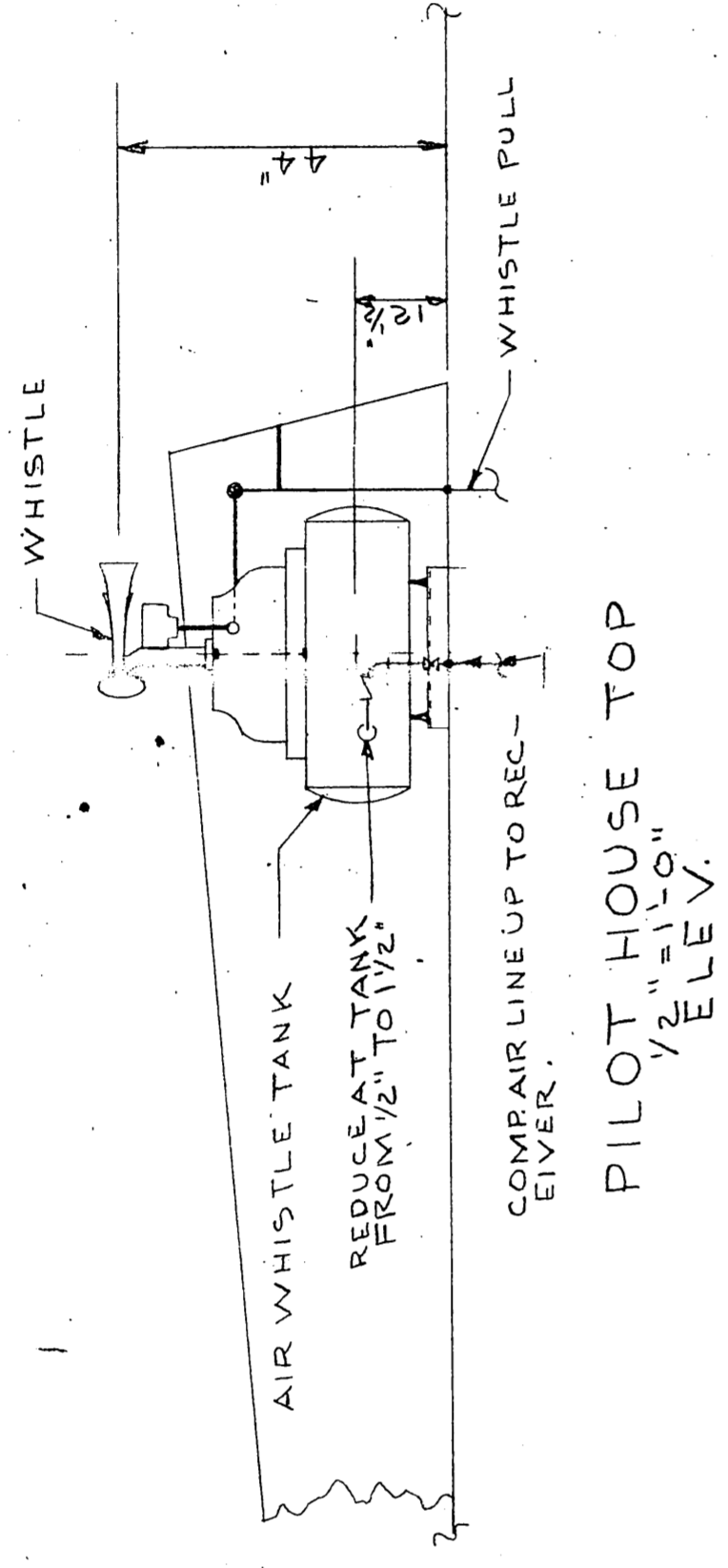


PILOT HOUSE TOP
1/2" = 1'-0"
PLAN



PLAN OF COMP. AIR PIPING
UNDER P.H. ROOF.
3/16" = 1'-0"
TO PILOT HOUSE AIR WHISTLE
FROM STATION No. 1, FOR COMP.
AIR PIPING SEE DWG. P-7 10F2



NOTE
FOR COMP. AIR PIPING
SEE DWG. P-7 10F2

OCT 30 1973

SYM	DESCRIPTION	DATE	BY
	REVISIONS		
APPROVALS			
ABS			
USCG	FCC		
USPHS			
U.S. NAVAL SHIP SYSTEMS COMMAND WASHINGTON D.C. 20360			
OCEANOGRAPHIC RESEARCH SHIP AGOR (UTILITY) CLASS			
HALTER MARINE SERVICES, INC. P.O. BOX 29266 NEW ORLEANS, LA. 70129			
WHISTLE PIPING			
SCALE	NOTED	DATE	HALTER
		9-13-73	DWG. NO.
DRAWN BY	CHK'D BY		
	CLR		P-7
HALTER	2187		
HULL NO.	376	JOB NO.	2188
			2 OF 2
NAVSHIPS NO. AGOR 21-513-001			REV. 0